






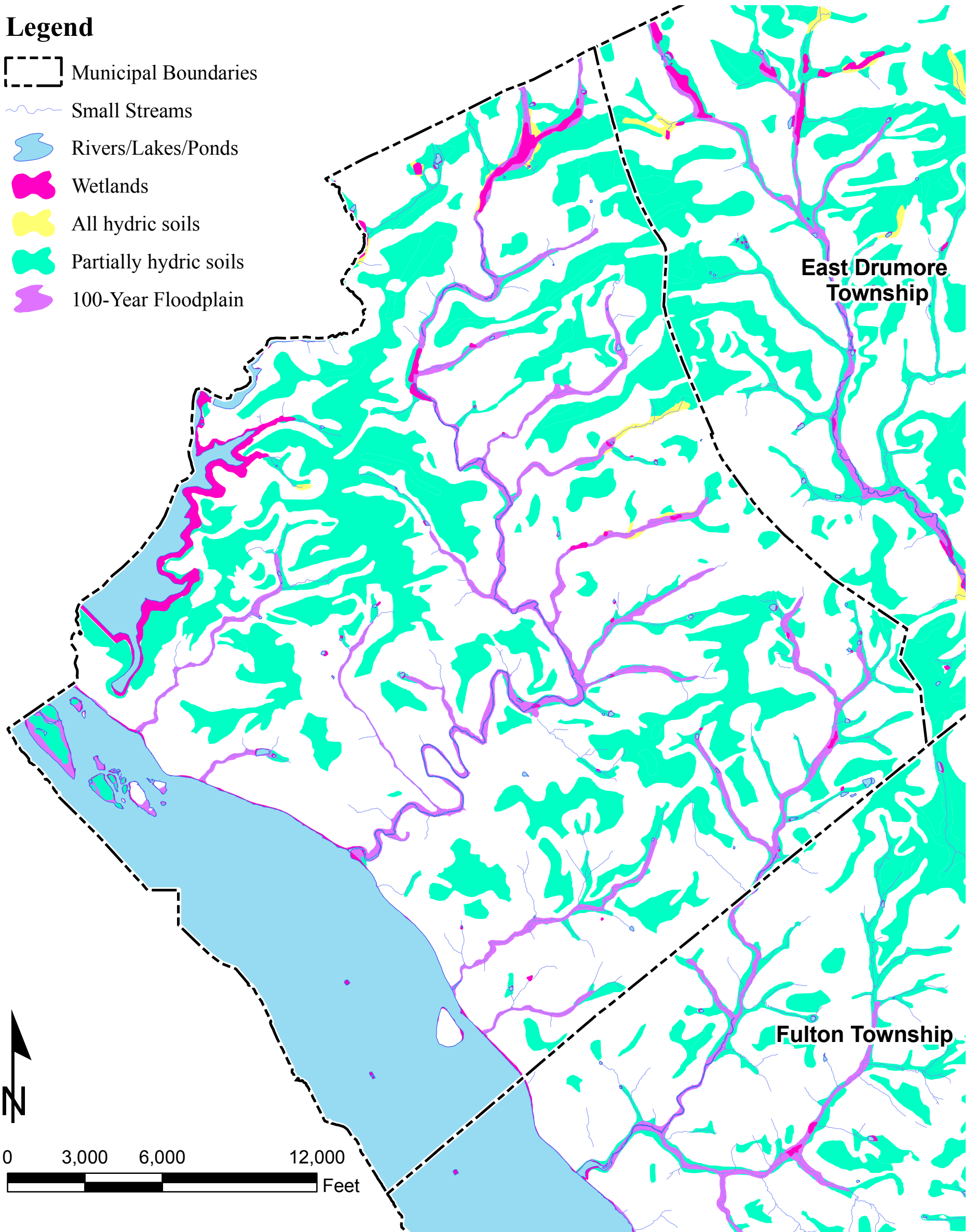


Map 3: Floodplains, Hydric Soils, and Wetlands Drumore Township Act 537 Plan

Legend

-  Municipal Boundaries
-  Small Streams
-  Rivers/Lakes/Ponds
-  Wetlands
-  All hydric soils
-  Partially hydric soils
-  100-Year Floodplain



Source: Lancaster County GIS Landbase

Reference: NAD 1983 State Plane Pennsylvania South FIDS 3702

RETTEWSM